



MOR-GRAN-SOU
ELECTRIC COOPERATIVE

Serving Morton, Grant and Sioux counties

THIS ISSUE:

- How power gets to me
- A message from Basin Electric
- Win Medora Musical tickets
- Lineworkers attend hotline school

JULY
2025

Your Touchstone Energy® Cooperative 



The BIO Girls Mandan participants train for a 5K run as part of their activities

Operation Round Up donations aid in lasting impacts

Mor-Gran-Sou Electric Cooperative takes pride in supporting local community initiatives, including touch-a-truck events and youth programs. Through Operation Round Up, we can further support initiatives by financially giving to programs which benefit our communities and members.

Operation Round Up is a voluntary program in which Mor-Gran-Sou Electric members opt to round up their bills to the nearest dollar. The most a member can give each month is 99 cents, often amounting to less than \$12 a year. But as the donations accumulate, cents turn into impactful dollars for local entities. Recently, Mor-Gran-Sou Electric helped support BIO Girls Mandan through the Operation Round Up program.

BIO (Beautiful Inside and Out) Girls delivers confidence building and preventive mental health programs to girls in second through sixth grades. This program consists of 12 sessions, with a focus on improving the self-esteem of young girls.

"This curriculum is worked on by professionals for the program," says Lisa Brew, co-director of the BIO Girls Mandan. "The research has been done and is effective."

In early March, the BIO Girls Mandan gathered for the first session. Each session covers a lesson topic, such as growth mindset, communication and many others, to help them flourish and grow. Along with a lesson, each session is also accompanied by group and physical activity.

continued on next page



MOR-GRAN-SOU
ELECTRIC COOPERATIVE

continued from previous page


“Part of the sessions is including non-competitive physical activity,” Brew says. “So, we train for a 5K.”

During these sessions, participants learn life skills, engage with mentors and participate in physical activity and a community service project. Community service projects have varied over the three years of the program. This year, they painted friendship benches and donated them to Lakewood Elementary.

Brew is a co-founder of the Mandan chapter with Jill Morrison, and a driving force behind them getting involved is being able to give back to the Mandan community.

Mor-Gran-Sou Electric knows programs such as these have a lasting impact on our community, and we look forward to supporting other future community entities.

If you are a Mor-Gran-Sou Electric member and would like to round up your bill and donate the remaining change to our Operation Round Up program, simply call the office at 701-597-3301, 800-750-8212 or 701-663-0297.

The next Operation Round Up grant application deadline is Sept. 12. If you are a part of a local organization looking for grant funding or know of one, visit morgransou.com/operation-round or call the office with questions. 



The BIO Girls Mandan program painted "friendship benches" and donated them to Lakewood Elementary.



BIO Girls Mandan received an Operation Round Up grant to offer lessons and group activities to girls in second through sixth grades.




WIN MEDORA MUSICAL TICKETS

Call our office to sign up for Operation Round Up and have your monthly bill rounded up to the next dollar. By rounding up your bill, the change is donated to our Operation Round Up fund that supports local organizations through grants.

The most a member can give is 99 cents a month, which can amount to around \$12 a year.

Sign up between now and July 6 for a chance to win a pair of tickets to the Medora Musical!

Help us make a positive impact on local organizations by giving today! Learn more about Operation Round Up by visiting: morgransou.com/operation-round. 

MANAGER'S MESSAGE:

How power gets to you




Travis Kupper

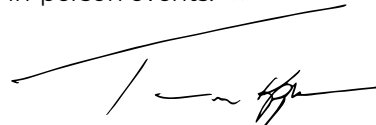
Co-General Manager/CEO

Every time we flip a switch, we often take for granted the complex journey electricity travels – from generation to transmission – before it lights our homes and powers our lives. Have you ever wondered how the electricity that powers your home travels from generation plants to your outlets? Understanding this journey can deepen your appreciation for the reliable service we strive to provide. Here's a more detailed look at how power reaches you:

inspect and maintain these lines, ensuring they remain safe and efficient.

Employees at Mor-Gran-Sou Electric Cooperative are committed to providing you with reliable service. In the event of outages, they work diligently to assess the situation and restore power quickly. We use technology to pinpoint issues and prioritize repairs, focusing first on critical services and areas with the most members affected.

Understanding how power is delivered allows you to appreciate the complexities of our system and the importance of maintaining it. We encourage you to ask questions, share concerns and participate in our in-person events. 



Generation

Electricity is produced at power plants using various resources, including coal, natural gas, nuclear and renewable sources, such as wind, solar and hydro. Each source plays a vital role in creating a balanced energy mix that meets our communities' needs, while keeping a reliable source of energy for our membership.

Transmission

After generation, electricity enters the high-voltage transmission system. These large towers carry electricity over long distances to minimize energy loss. Our regional grid connects multiple power plants and allows for a reliable flow of electricity, helping to balance supply and demand.

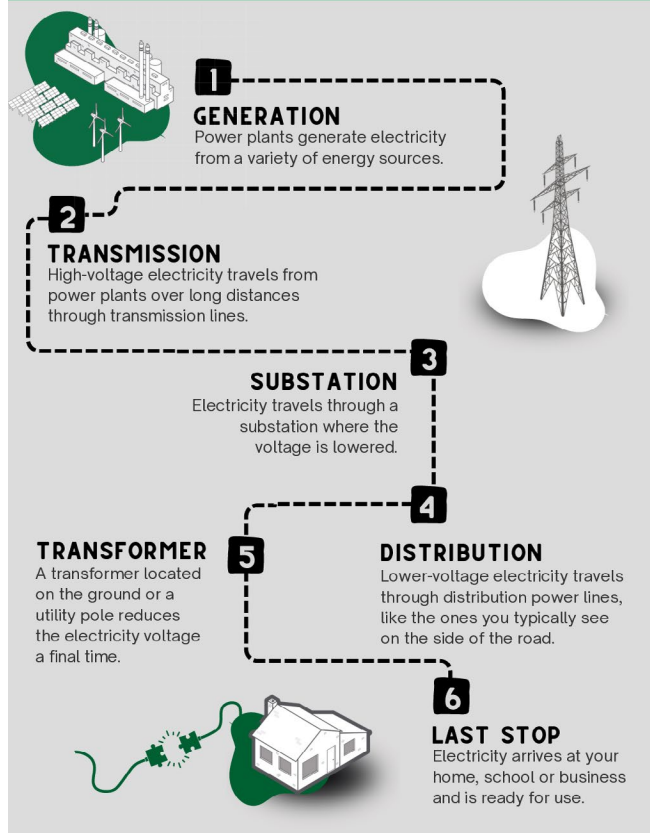
Substation transformation

Once the electricity arrives at substations, it undergoes a transformation. Here, the high-voltage electricity is stepped down to a lower voltage suitable for distribution. Our substations are equipped with advanced technology that monitors the flow of electricity and ensures it meets safety standards. Additionally, this technology allows efficiency during outages by allowing access from remote sites to help restore power.

Distribution network

From substations, electricity travels through a network of distribution lines. This system is designed to deliver power directly to homes and businesses in our service area. Our dedicated teams regularly

CRITICAL CONNECTIONS





MOR-GRAN-SOU
ELECTRIC COOPERATIVE

A MESSAGE FROM BASIN ELECTRIC:

A year of growth, innovation and resilience

BY BASIN ELECTRIC POWER COOPERATIVE CHIEF EXECUTIVE OFFICER AND GENERAL MANAGER TODD BRICKHOUSE AND BOARD PRESIDENT WAYNE PELTIER

Basin Electric Power Cooperative continues to adapt to challenges, while ensuring reliability and affordability for its members. In 2024, growth continued across Basin Electric's service territory, with the 2025-34 financial forecast showing the cooperative's projected load growth over the next 10 years is expected to reach 3% – significantly higher than the national average of less than 1%.

To meet this demand, Basin Electric's 2025-34 financial forecast is showing significant infrastructure investments of nearly \$8 billion in projected capital expenditures over the next decade, nearly doubling its balance sheet. This figure is anticipated to increase with future iterations of the financial forecasts.

Strategic investments

With rapid growth, Basin Electric has taken proactive steps to expand its generation and transmission capacity. In 2024, the cooperative continued making significant investments through major capital projects and additional strategic investments across its system. These investments support long-term system resilience, enhance grid reliability and accommodate increasing energy demand. Several notable projects and developments include:

- **Dynamic Line Rating (DLR) Technology:** Installed DLR technology to enhance grid reliability and optimize transmission capacity in northwestern North Dakota.
- **Leland Olds Station Substation:** A new 345-kilovolt (kV) substation, one of Basin Electric's largest, is under construction near Stanton, with completion expected by this summer.
- **Pioneer Generation Station Phase IV:** Progressing toward an additional 580 megawatts (MW) of capacity by 2025 to support load growth and grid stability in the Bakken region.
- **Roundup to Kummer Ridge transmission line:** A 33-mile, 345-kV transmission line was energized in December 2024, five months ahead of schedule, enhancing grid reliability and reducing congestion.
- **Bison Generation Station:** Basin Electric spent 2024 planning its next major baseload generation facility, the Bison Generation Station, which was approved by the board of directors in January. This \$4 billion, 1,470-MW natural gas facility near



President **Wayne Peltier**, left, and CEO and General Manager **Todd Brickhouse** held lead Basin Electric Power Cooperative.

Epping will be Basin Electric's largest solely owned power plant. It is expected to begin operations in 2030.

Carbon capture and environmental stewardship

Basin Electric continues to lead the nation in CO₂ capture and storage. In February 2024, the Great Plains CO₂ Sequestration Project went into service, with Dakota Gasification Company capturing and sequestering additional CO₂ via permanent geologic storage reservoirs adjacent to the plant. The facility reached a milestone in August 2024 by sequestering over 1 million metric tons of CO₂.

In November 2024, Basin Electric updated its sustainability report, showcasing the cooperative's commitment to reliable, affordable and sustainable energy, environmental stewardship and member-focused governance.

Regulatory challenges and advocacy

Basin Electric remains committed to defending its

all-of-the-above energy strategy, ensuring reliable, affordable power for members by prioritizing dispatchable resources, such as coal and natural gas alongside wind and solar.

The Environmental Protection Agency's regulatory overreach continued to threaten reliability, making it critical to advocate for policies that support dispatchable resources.

In 2024, Basin Electric strengthened partnerships with the National Rural Electric Cooperative Association, other generation and transmission entities and industry allies to challenge regulatory threats, while continuing to serve reliable power to its members.

Looking ahead

Basin Electric remains focused on providing reliable, affordable and sustainable power for its

members. Through strategic investments, thoughtful decisions and regulatory advocacy, the cooperative will continue to adapt, innovate and invest to ensure long-term success. 

Basin Electric's mission: *We are a safe, environmentally responsible cooperative that provides reliable, affordable power, products and services to sustain the quality of life for its member-owners across rural America.*

Editor's note: *Basin Electric Power Cooperative supplies much of the power distributed to Mor-Gran-Sou Electric Cooperative members throughout the tri-county area. We asked Todd Brickhouse and Wayne Peltier to update our members on what is happening at Basin Electric.*

MESSAGE FROM MEMBER SERVICES:

Members gather for the 78th Annual Meeting

Mor-Gran-Sou Electric Cooperative members and guests gathered in Mandan at Mor-Gran-Sou Electric's Mandan Service Center on June 12 for the 78th Annual Meeting of the membership. Folks were welcomed by employees with snacks and a thank-you gift upon registration. Before the business meeting participants visited various booths to learn more about cooperative initiatives and work plan from employees.


Mor-Gran-Sou Electric chairman, Steve Tomac welcomed and thanked everyone for attending the 78th Annual Meeting. Mandan Boy Scouts Troop #54 presented the colors and led the membership in the Pledge of Allegiance. The membership voted to fill the board positions for Grant County, Mandan Area and Morton County. Ryan Petrick from Elgin representing Grant County; Pam Geiger from Mandan representing Mandan Area; and Mark Doll from New Salem representing Morton County were re-elected by the membership. Additionally, the membership voted to approve the 2024 Annual Meeting Minutes and proposed by-law amendments.

Members listened to cooperative updates from Co-General Managers/CEOs, Travis Kupper and Jason Bentz and Chief Financial Officer Alex Craigmile. Department reports were provided by Manager of Operations Gary Fitterer and Chief of Staff/Member Services Manager Julie Armijo. A 2024 Charitable Foundations report was also provided by Jeff Tweeten.

High school students were recognized for being awarded 2025 scholarships. Lucy Blend, the 2024

Youth Tour recipient, presented highlights from her trip to Washington D.C. last June. Mor-Gran-Sou Electric's 2025 Youth Tour recipient, Stray Ressler, was also recognized. Additionally, Mor-Gran-Sou Electric awarded Luck-of-the-Draw Scholarships to Anna Bahm from Mandan, Makenzie Miller from Mandan and Victoria Richter from Flasher who each received a \$500 scholarship.

After the business meeting, a complimentary meal grilled by the Mandan Rural Fire Department with the grill provided by Border States Electric was enjoyed. During this time members were awarded door prizes and enjoyed live music by Brad Doll.

The board of directors, co-general managers and staff at Mor-Gran-Sou Electric wish to thank members for participating in the 78th Annual Meeting of the membership and look forward to meeting electrical needs in the future. 



Members stopped at various booths to learn more about cooperative programs and initiatives.



MOR-GRAN-SOU
ELECTRIC COOPERATIVE

MESSAGE FROM OPERATIONS: **Lineworkers attend Hotline School**



Gary Fitterer

Manager of Operations

Each day, lineworkers come face-to-face with work that may potentially be hazardous, such as working on “hot” or energized power lines. Continuing education and training opportunities help the lineworkers at Mor-Gran-Sou Electric Cooperative be prepared to face situations that may arise in the field.


The North Dakota Association of Rural Electric Cooperatives (NDAREC) hosts an annual

Hotline School to ensure lineworkers are prepared to work in energized power line situations and learn new techniques.

Earlier this summer, four of Mor-Gran-Sou Electric’s lineworkers attended the hotline training: Cody Graetz, Troy Kuball, Chance Magilke and

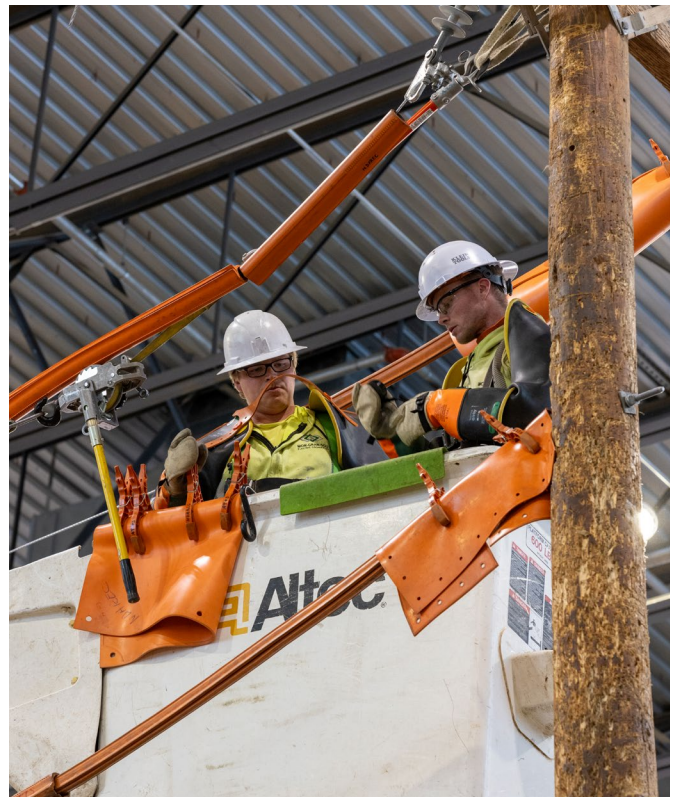
Doug Roethlisberger. During the two-day course, lineworkers rotated through hands-on training simulations that help enhance their skills of working on energized power lines.

Being able to work on energized power lines helps prevent electrical service interruption to members during routine maintenance and outages when possible. Training lineworkers with these skills also allows them to work safely and diligently during these situations. Having lineworkers participate in training opportunities helps familiarize them with new equipment, industry changes and keeps their skills up to date.

Safety remains our number 1 priority at Mor-Gran-Sou Electric. To ensure our employees possess the knowledge and training to keep themselves, our team, members and communities safely powered, we are fortunate to have access to training opportunities like Hotline School through NDAREC. 



Journeyman lineworker **Doug Roethlisberger** works through a simulation that mimics a situation lineworkers may face every day.



Journeyman lineworker **Chance Magilke** (left) and apprentice lineworker **Troy Kuball** work on an energized line simulation.

SAFETY STARTS WITH ME: Tips to reduce wildfire risks

While much needed rainfall has brought relief to many of our drought-impacted areas and reduced the immediate risk of wildfires, Mor-Gran-Sou Electric Cooperative remains committed to fire mitigation. Weather conditions can change quickly, and we prioritize taking precautions to ensure safety for our employees, members and communities.

“As we work across the service territory, we are equipped with fire mitigation equipment,” says Lance Brown Otter, a journeyman lineworker. “This equipment includes a portable firefighting unit mounted on a service pickup/UTV, water cannons and fire flapper/paddles on each co-op vehicle.”

Cooperative employees are also briefed with the fire mitigation plan to ensure they can respond accurately to an emergency while working in the field. Through regular vegetation management, grid maintenance and hardening practices, Mor-Gran-Sou Electric is proactively working to reduce risks and improve the reliability of our local system.


As a member of Mor-Gran-Sou Electric, there are steps you can take to prevent wildfires as well.

- **Follow local fire regulations.** Always check for burn bans or restrictions in your area before burning anything or using open flames outdoors.
- **Don't burn on windy days.** Avoid outdoor burning when it's windy or dry, as embers can easily spread and ignite surrounding areas.
- **Use equipment safely.** Tools like lawnmowers or chainsaws can spark fires. Use them during cooler times of the day and keep them in good working condition.
- **Clear vegetation and debris.** Maintain a defensible



space around your home by removing dry leaves, dead branches and other flammable materials.

- **Properly extinguish campfires.** Always douse your campfire with water, stir the ashes and ensure everything is cool to the touch before leaving the area.

Let's all work together to make this summer memorable and do what we can to ensure safety across our service area. 

KX/Co-op Day at the North Dakota State Fair

Wednesday, July 23
10 a.m. to 3 p.m. CT

Stop by for free breakfast, prizes, cash drawings and an ice cream social. Stop by our office for coupons to save on gate and rodeo admission, rides and more!





MOR-GRAN-SOU
ELECTRIC COOPERATIVE

MOR-GRAN-SOU ELECTRIC BOARD MEETING HIGHLIGHTS April 23

The board of directors meeting of Mor-Gran-Sou Electric Cooperative was held on April 23 at the Mandan Service Center in Mandan. Chair Steve Tomac called the meeting to order at 9:29 a.m. A quorum was present. Also present were Mor-Gran-Sou Electric's co-General Manager/CEO Jason Bentz, Chief Financial Officer Alex Craigmile, Manager of Operations Gary Fitterer, Chief of Staff/Member Services Manager Julie Armijo, Interim General Counsel Andrew Fergel and Executive Assistant Connie Hill.

Consent agenda: The consent agenda was approved as presented.

Strategic items: Bentz presented the co-general managers' report, which included updates on federal issues, North Dakota managers group and others. Several additional Basin Electric Power Cooperative board documents were available for review.

Department reports: Craigmile provided a financial report. Fitterer reviewed the operations report, which included projects crews are working on and a crew update. Armijo provided a member services report on member meetings, annual meeting information and cooperative programs. Chief Information Officer Charlie Dunbar provided a report. Fergel provided a general counsel report on projects.

Action items: Action items were discussed and resolved.

Discussion/general information: The board discussed upcoming meetings and other information.

The meeting concluded with an adjournment. Secretary-Treasurer Pam Geiger certified the accuracy of the minutes.

Next meeting date: The next meeting is at 9:30 a.m. CT on July 30 in Fort Yates. 

Planning a trip to Medora this summer?

As a member of Mor-Gran-Sou Electric Cooperative, your local Touchstone Energy® Cooperative, you are eligible for discounts on tickets, lodging and golf in Medora.

- Medora Musical
- Pitchfork steak fondue
- Bully Pulpit Golf Course
- Gospel Brunch
- Old Town Hall Theater shows
- Lodging at Elkhorn Quarters, Badlands Motel, Rough Riders Hotel and Medora Campground

Call 800-MEDORA-1 or book online at medora.com. Use the discount code: **TOUCH2025**.



MOR-GRAN-SOU
ELECTRIC COOPERATIVE

202 6th Ave. W. - PO Box 297
Flasher, ND 58535-0297
Phone: 701- 597-3301 Flasher
701- 663-0297 Mandan
Toll-free: 800-750-8212 Fax: 701-597-3915
Email us: info@morgransou.com
UNDERGROUND LINE LOCATES
800-795-0555 OR 811

OFFICERS AND DIRECTORS

Chair.....Steve Tomac
Vice Chair.....Chad Harrison
Secretary-Treasurer.....Pam Geiger
Directors.....Mark Doll, Rodney Froelich,
Bob J. Leingang, Ryan Petrick,
Kathy Tokach, Casey Wells

MANAGEMENT

Co-GM/CEOTravis Kupper
Co-GM/CEOJason Bentz

www.morgransou.com

Your Touchstone Energy® Cooperative 

